



UNITED STATES DEPARTMENT OF AGRICULTURE
FOREST SERVICE



KLAMATH NATIONAL FOREST
FOREST ORDER No. 05-05-23-07

EMERGENCY FIRE CLOSURE – Happy Camp Complex Fires

Pursuant to 16 U.S.C. § 551 and 36 C.F.R. § 261.50(a) and (b), and to provide for public safety, the following acts are prohibited within the Oak Knoll and Scott River Ranger Districts of the Klamath National Forest. This Order is effective from August 20, 2023, at 11 AM, through September 18, 2023.

1. Going into or being upon National Forest System lands within the Lightning Complex Fire Restricted Area (described in Exhibit A) as shown on the attached map, Exhibit B. **36 C.F.R. § 261.52(e).**
2. Being on any National Forest System Road within the Happy Camp Complex Fire Restricted Area (listed in Exhibit A) as shown on the attached map, Exhibit B. **36 C.F.R. § 261.54(e).**
3. Being on any National Forest System Trail within the Happy Camp Complex Fire Restricted Area (listed in Exhibit A) as shown on the attached map, Exhibit B. **36 C.F.R. § 261.55(a).**
4. Entering or using any Developed Recreation Site within the Happy Camp Complex Fire Restricted Area (listed in Exhibit A) as shown on the attached map, Exhibit B. **36 C.F.R. § 261.58(b).**

Pursuant to 36 C.F.R. § 261.50(e), the following persons are exempt from this Order:

1. Persons with Forest Service Permit No. FS-7700-48 (Permit for Use of Roads, Trails, or Areas Restricted by Regulation or Order), specifically exempting them from this Order.
2. Any Federal, State, or local officer, or member of an organized rescue or fire-fighting force in the performance of an official duty.
3. Owners or lessees of land in the area to the extent necessary to access their property.

These prohibitions are in addition to the general prohibitions in 36 C.F.R. Part 261, Subpart A. A violation of these prohibitions is punishable by a fine of not more than \$5,000 for an individual or \$10,000 for an organization, or imprisonment for not more than 6 months, or both. 16 U.S.C. § 551 and 18 U.S.C. §§ 3559, 3571, and 3581.

Executed in Yreka, California, this 20th day of August, 2023, at 3 PM.



Rachel Smith
Forest Supervisor, Klamath National Forest



EMERGENCY FIRE CLOSURE – Happy Camp Complex Fire Restricted Area – Exhibit A

The boundary of the Happy Camp Complex Fire Restricted Area begins at the intersection of California 96 and Walker Bridge in Township 46 North, Range 9 West, Section 11 and heads south to the intersection of Siskiyou County 8G004 in Township 46 North, Range 9 West, Section 14 and heads easterly until the intersection with 46N45 in Township 46 North, Range 9 West, Section 9; then proceeds south along 46N45 until the intersection with 45N89 at McKinney Saddle in Township 45 North, Range 9 West, Section 8; then proceeds easterly along 45N89 until the intersection with 45N89B in Township 45 North, Range 9 West, Section 20; then continues south along 45N63 until the intersection with 45N89 in Township 45 North, Range 9 West, Section 29; continuing south along 45N89 until the intersection with 45N60 in Township 45 North, Range 9 West, Section 32 until the intersection with East Fork Creek in Township 44 North, Range 9 West, Section 4 then proceeds south until the intersection with 44N36 in Township 44 North, Range 9 West, Section 9; continuing south along 44N36 until the intersection with 44N18 until the intersection with Siskiyou County 7F01 in Township 44 North, Range 9 West, Section 30; then continues west until the intersection with the Klamath National Forest Boundary on the southern edge of Township 44 North, Range 11 West, Section 24 and Township 44 North, Range 10 West, Section 19; then proceeds south along the Klamath National Forest Boundary until the intersection with the Marble Mountain Wilderness Boundary in Township 43 North, Range 11 West, Section 24; then follows the Marble Mountain Wilderness Boundary generally south until the intersection with Shelly Fork Trail 5527 in Township 42 North, Range 11 West, Section 13; then proceeds westerly until the intersection with the Pacific Crest Trail along the southern edge of Township 42 North, Range 11 West, Section 13; continuing northward along the Pacific Crest Trail through the Marble Mountain Wilderness; continuing north and crossing the boundary into the Oak Knoll Ranger District; continuing north along the Pacific Coast Trail until it reaches the northern edge of Township 46 North, Range 12 West, Section 14 and then proceeds northwest across the Klamath River to intersect with Siskiyou 8D002 at Township 46 North, Range 12 West, Section 11; continuing easterly along 8D002 until the intersection 46N50 Township 46 North, Range 11 West, Section 5; continuing along 46N50 until the intersection with 47N69 at Township 47 North, Range 11 West, Section 35; proceeding north along 47N69 until the intersection with Forest Service 12 Road at Rainey Saddle at Township 47 North, Range 10 West, Section 12; then continues easterly along the 12 Road until it reaches the starting point at the intersection of Siskiyou 96 and Walker Bridge at Township 46 North, Range 9 West, Section 11.

Developed Recreation Areas & Trailheads Closed: Brown Bear River Access, Blue Heron River Access, Johnson Bar River Access, Townsend Gulch River Access, Tompkins Creek River Access, Canyon Creek River Access, Gold Flat River Access, Sugarpine Gulch River Access, Rocky Point River Access, Grider Trailhead, Kelsey Trailhead, Lovers Camp Trailhead, Boulder



FOREST ORDER No. 05-05-23-07



Trailhead, Paradise Trailhead, Tyler Meadows Trailhead, Cold Spring Trailhead, Box Camp Trailhead, Indian Scotty Campground, O'Neil Creek Campground, Jones Beach Picnic Area, Lovers Camp Campground, Sarah Totten Campground

Trails Closed: 5205, 5553, 5544, 5401, 5560, 5537, 5547, 5555, 5549, 5542, 5548, 5527, 5545, 5533, 5551, 5539, 5543, 5554, 5556, 5528, 5535, 5562, 5536, 5529, 5538, 5559, 5531, 5514, 5561, 2000, 5541, 5563, 5540, 5532, 5534, 5550, 5552, 5530, 5525, 5526, 5546

Roads Closed: 55D013, 46N20YA, 47N61, 47N87, 45N63, 44N59Y, 51D018, 45N34, 45N63Y, 46N62, 45N19YB, 44N34YB, 46N20, 51D029A, 44N51Y, 46N23, 44N47, 46N64, 45N77, 55D002A, 45N28, 44N24A, 44N17YA, 46N65, 46N47, 45N57YA, 44N24YA, 46N19, 47N62, 47N77B, 46N60C, 46N32, 44N51, 44N53Y, 44N18, 45N16B, 44N39B, 46N51Y, 45N38B, 45N06Y, 47N27, 44N39, 45N16, 55D006, 46N63, 45N72X, 44N51YA, 44N53A, 46N20Y, 46N74YA, 47N45Y, 47N56, 45N90, 46N50, 46N84B, 44N49Y, 44N34YA, 46N30Y, 46N34, 45N17, 44N45, 45N38, 43N20Y, 47N67Y, 44N60Y, 46N21C, 44N45C, 47N65, 47N05Y, 46N85, 44N96D, 45N63B, 45N64, 46N55, 47N69D, 47N69C, 44N07Y, 43N45A, 55D005, 45N01XA, 46N21, 46N20YB, 46N65A, 44N41C, 45N09YA, 43N45B, 51D021B, 46N86, 44N24, 46N33Y, 45N65C, 45N42YB, 46N37, 44N59YA, 45N17A, 43N45C, 46N84, 45N90A, 45N05Y, 45N65, 55D001, 45N34A, 44N52, 46N74Y, 44N90Y, 46N21A, 44N34Y, 45N81, 45N14, 46N51A, 47N63Y, 47N87A, 12, 45N13X, 47N84, 44N40, 51D024, 43N45D, 55D010, 45N89B, 44N20, 44N41D, 46N76Y, 46N21B, 45N65A, 55D002, 51D021, 46N60A, 45N60B, 47N17Y, 46N80XB, 47N65B, 46N30YA, 44N57Y, 45N71C, 47N77D, 45N75, 46N80XA, 47N77, 51D015, 46N39Y, 45N71, 45N78A, 44N56YA, 44N44, 45N77B, 45N02Y, 44N36A, 44N96F, 45N42Y, 44N17Y, 46N50A, 46N37A, 44N02X, 45N89C, 44N39C, 46N11Y, 45N72, 55D007C, 46N53A, 46N14, 46N36YA, 45N17B, 44N62Y, 47N96, 45N60C, 45N27, 45N20, 43N19A, 46N20YC, 44N96E, 46N84A, 47N45, 55D011, 46N51, 46N84C, 45N89E, 47N54, 55D008, 45N60, 44N55A, 46N80X, 46N60B, 55D001A, 45N77A, 46N60G, 47N90, 44N55B, 45N63A, 46N54, 44N43Y, 46N65B, 44N30YA, 44N43, 44N56Y, 46N77, 45N32Y, 46N27Y, 46N24X, 47N64, 44N67, 45N19YA, 46N64A, 51D021A, 45N69, 45N08A, 44N24B, 47N04A, 45N73, 44N49, 46N28Y, 46N85A, 55D007A, 47N51, 46N85Y, 55D003A, 47N61A, 46N31, 46N44, 51D029, 45N67, 46N79, 46N60, 45N60E, 44N45A, 46N60D, 51D022, 47N04, 44N96A, 44N96, 45N77D, 45N38A, 45N79, 46N11YA, 46N60F, 46N29Y, 43N19, 44N39A, 45N08B, 45N75A, 44N46Y, 45N07Y, 46N61A, 46N84Y, 46N08Y, 12A, 55D003, 46N48, 51D014, 47N04B, 45N01XB, 46N61, 44N43A, 45N16Y, 46N42, 45N61, 44N24Y, 45N19Y, 47N69A, 44N53, 46N66, 51D020, 45N79A, 47N63, 45N66, 55D014, 46N36Y, 51D019, 55D007, 44N54Y, 47N69, 44N51A, 51D023, 46N24XA, 44N52Y, 45N15Y, 44N36, 43N45, 55D004, 46N14Y, 51D030, 44N45E, 44N30Y, 46N58Y, 45N64C, 45N78, 46N31C, 46N23A, 45N05YB, 44N55, 44N17, 46N45, 45N05YA, 46N53C, 55D007B, 45N74, 45N59Y, 46N61B, 44N41, 45N63YA, 45N57Y, 46N53, 44N35, 45N08, 46N48A, 46N54A, 45N90Y, 45N84, 44N45F, 46N60E, 45N75B, 44N96C, 46N67, 45N10X, 44N07YC, 45N68, 45N71B, 46N54D, 44N53C, 47N90A, 46N53B, 46N54B, 46N31B, 47N17YA, 44N52YA, SIS-7F002, 47N83, 47N25, 46N48C, 12B, 44N53B, 46N48B, 55D002B, 44N45D, 43N19B, 55D002C, 44N29Y, 45N78B, 45N09Y, 45N01X, 44N20A, 45N71A, 47N62A, 45N93, 55D012, 45N97Y, 45N89, 55D009, 45N77Y, 47N66



FOREST ORDER No. 05-05-23-07




**EMERGENCY FIRE CLOSURE – Lightning Complex Fire
Restricted Area – Exhibit B**

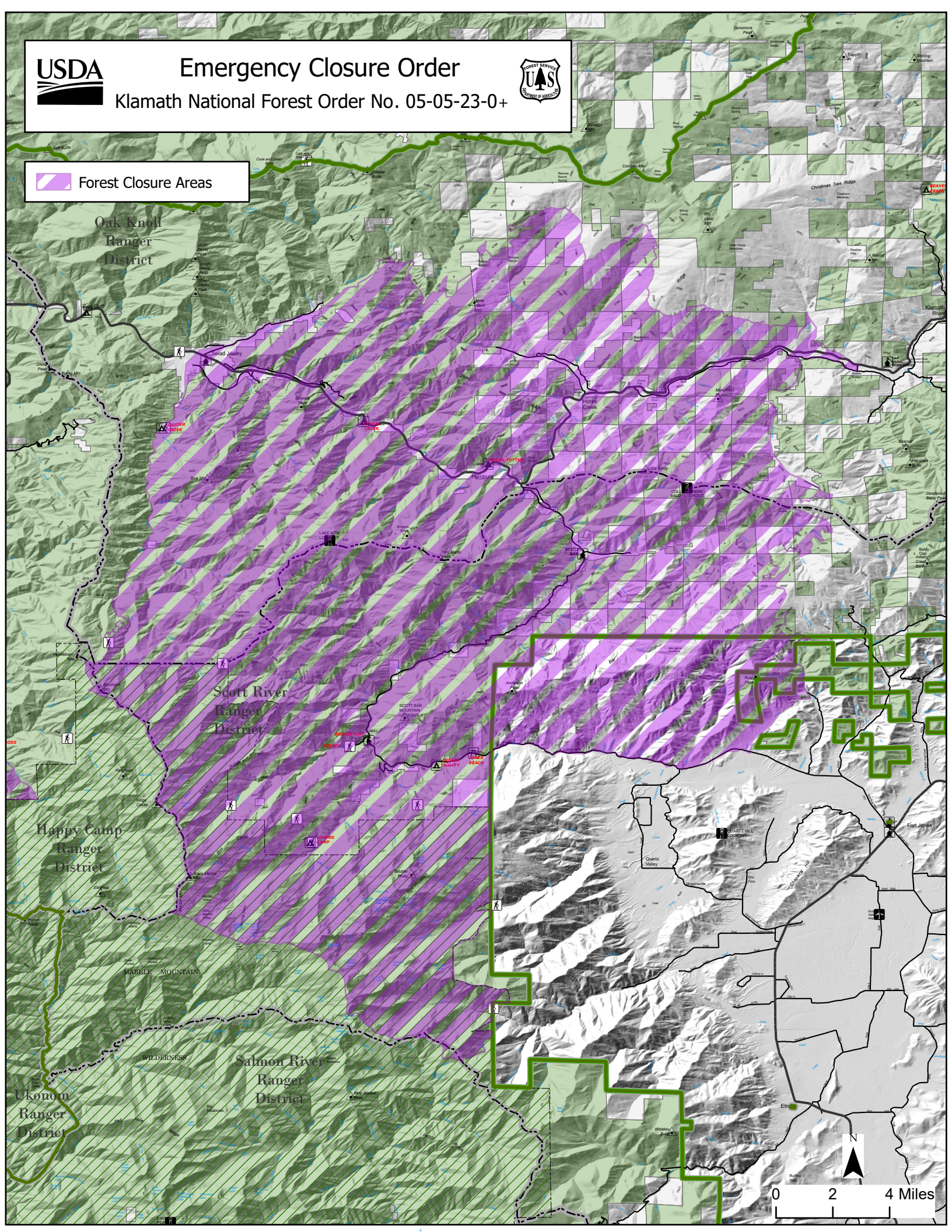


Emergency Closure Order

Klamath National Forest Order No. 05-05-23-0+



 Forest Closure Areas



Oak Knoll
Ranger
District

Scott River
Ranger
District

Happy Camp
Ranger
District

Ukonom
Ranger
District

Salmon River
Ranger
District

0 2 4 Miles